

# design template



**Build for Life**



**ABBREVIATIONS**

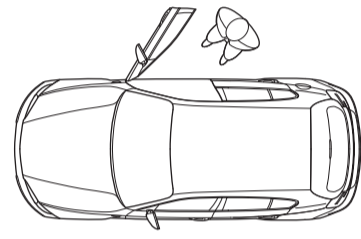
Min Minimum | Max Maximum | FFL Finished Floor Level

**ENTRANCE**

Must be sheltered from the weather and transitions between finished surfaces must not exceed 5mm in height

**CAR PARKING**

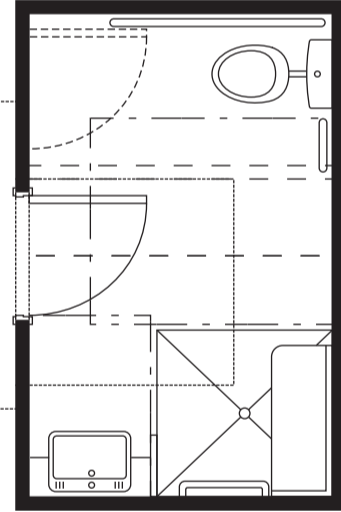
Level space minimum width of 3500mm for primary parking space



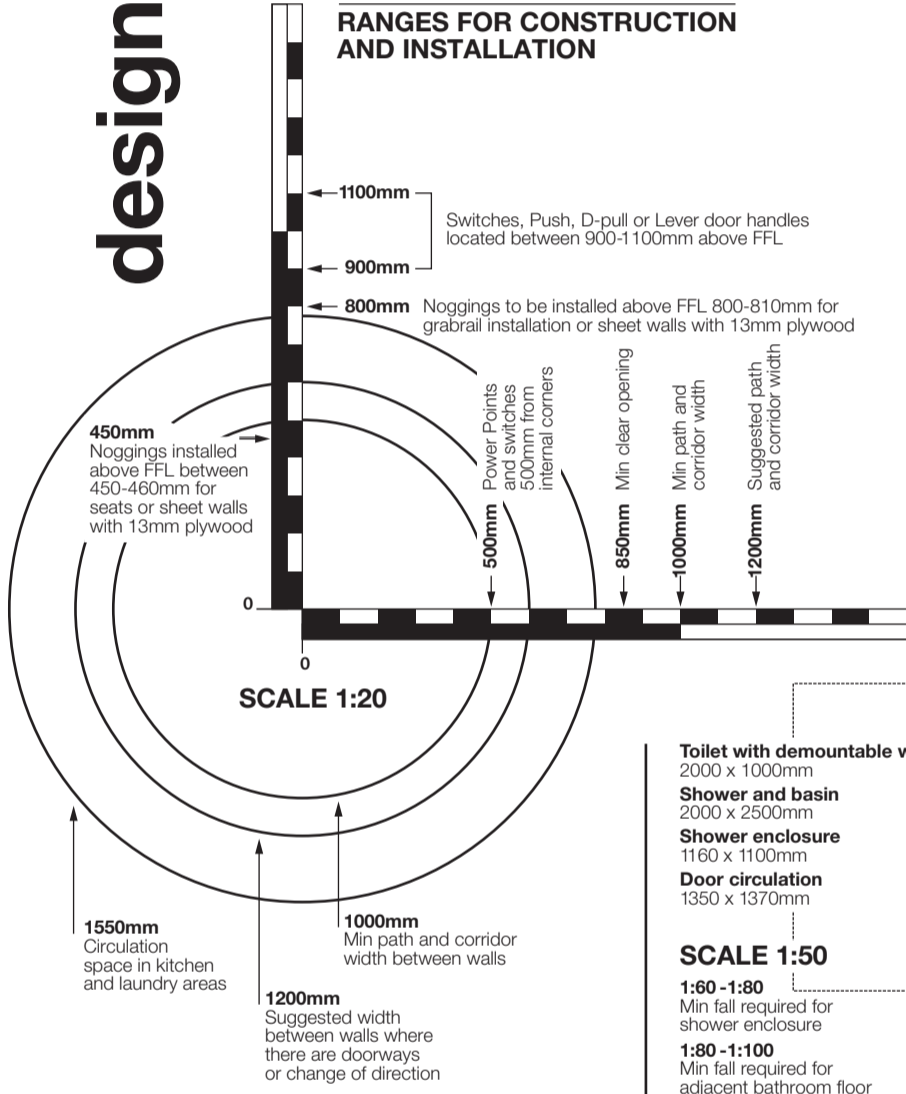
**SCALE 1:100**

**BATHROOM**

An adaptable or accessible toilet, basin and shower should be located on entry level  
At minimum an accessible toilet should be provided on entry level



**RANGES FOR CONSTRUCTION AND INSTALLATION**



- Toilet with demountable wall** 2000 x 1000mm
- Shower and basin** 2000 x 2500mm
- Shower enclosure** 1160 x 1100mm
- Door circulation** 1350 x 1370mm

**SCALE 1:50**

- 1:60 - 1:80** Min fall required for shower enclosure
- 1:80 - 1:100** Min fall required for adjacent bathroom floor

**RAMP AND PATH GRADIENTS**

